



# Priming Assisted Centrifugal Pump

## Model RP2 1/2B60

Size 4" x 2 1/2"



### PUMP SPECIFICATIONS

- Size:** 4" x 2 1/2" (101,6 mm x 63,5 mm) Flanges.
- Casing:** Gray Iron 30.  
Maximum Operating Pressure 235 psi (1620 kPa).\*
- Enclosed Type, Seven Vane Impeller:** Gray Iron 30.  
Handles 13/32" (10,3 mm) Diameter Spherical Solids.
- Impeller Shaft:** Stress-Proof Stainless Steel.
- Replaceable Wear Ring:** Gray Iron 30.
- Back Plate:** Gray Iron 30.
- Bearing Frame:** Gray Iron 30.
- Seal:** Cyclo Seal® Type, Mechanical w/Run-Dry Oil-Lubrication System. Silicon Carbide Rotating Face. Tungsten Titanium Carbide Stationary Face. Fluorocarbon (DuPont Viton® or Equivalent) Elastomers. Stainless Steel 18-8 Cage and Spring. Maximum Temperature of Liquid Pumped 160°F (71°C).\*
- Shaft Sleeve:** Chrome Plated Stainless Steel 416.
- Priming Chamber:** Gray Iron No. 30 Housing w/Stainless Steel Float and Linkage.
- Vacuum Hose:** EPDM.
- Discharge Check Valve:** Gray Iron 30 Housing; Buna-N Flapper.
- Radial Bearing:** Single Row Ball.
- Thrust Bearing:** Single Row Ball.
- Bearing Lubrication:** Grease.
- Flanges:** Gray Iron 30.
- Gaskets:** Vegetable Fiber, Resistant Synthetic Rubber.
- O-Rings:** Buna-N.
- Hardware:** Standard Plated Steel.
- Seal Oil Reservoir Sight Gauge.**
- Standard Equipment:** Belt-Driven 50 CFM Vacuum Priming Pump. Positive Seating Vacuum Priming Valve. Discharge Check Valve.
- Optional Equipment:** NPT Threaded Flanges. Metric Flanges. Strainer. SAE 1, 2 or 4 Bellhousing Adaptors.



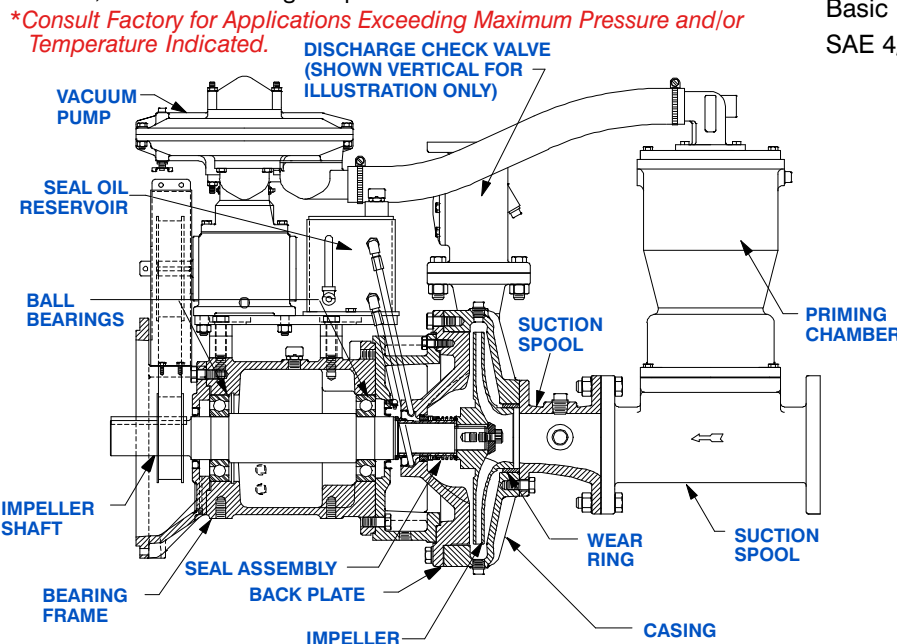
**WARNING!**

Do not use in explosive atmosphere or for pumping volatile flammable liquids.

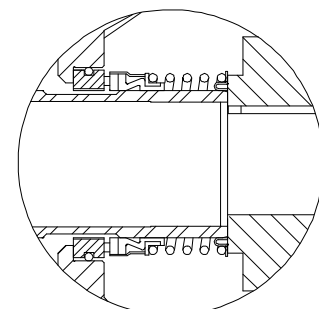
### CONFIGURATION OPTIONS

This **Gorman-Rupp RP Series™** Pump is Available in the Following Configurations:

- Basic Frame Mounted.
- SAE 4/10 Bellhousing w/Stromag Coupling.



### SEAL DETAIL



THE GORMAN-RUPP COMPANY • MANSFIELD, OHIO

GORMAN-RUPP OF CANADA LIMITED • ST. THOMAS, ONTARIO, CANADA

www.grpumps.com

Specifications Subject to Change Without Notice

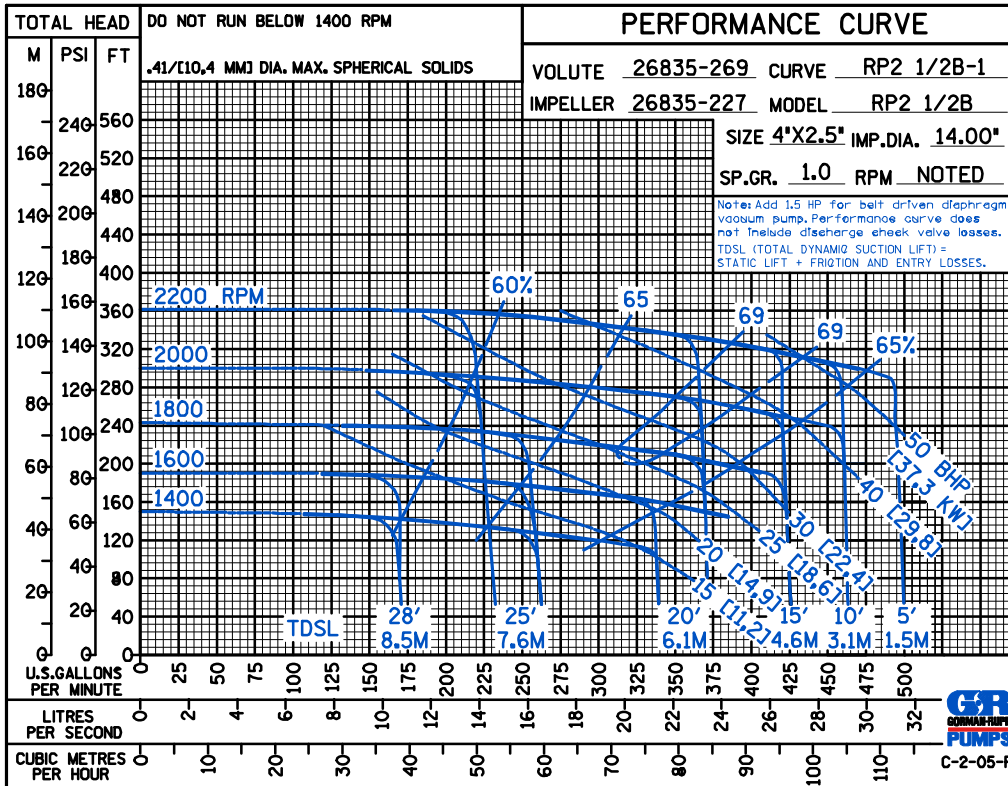
Printed in U.S.A.

**Specification Data**

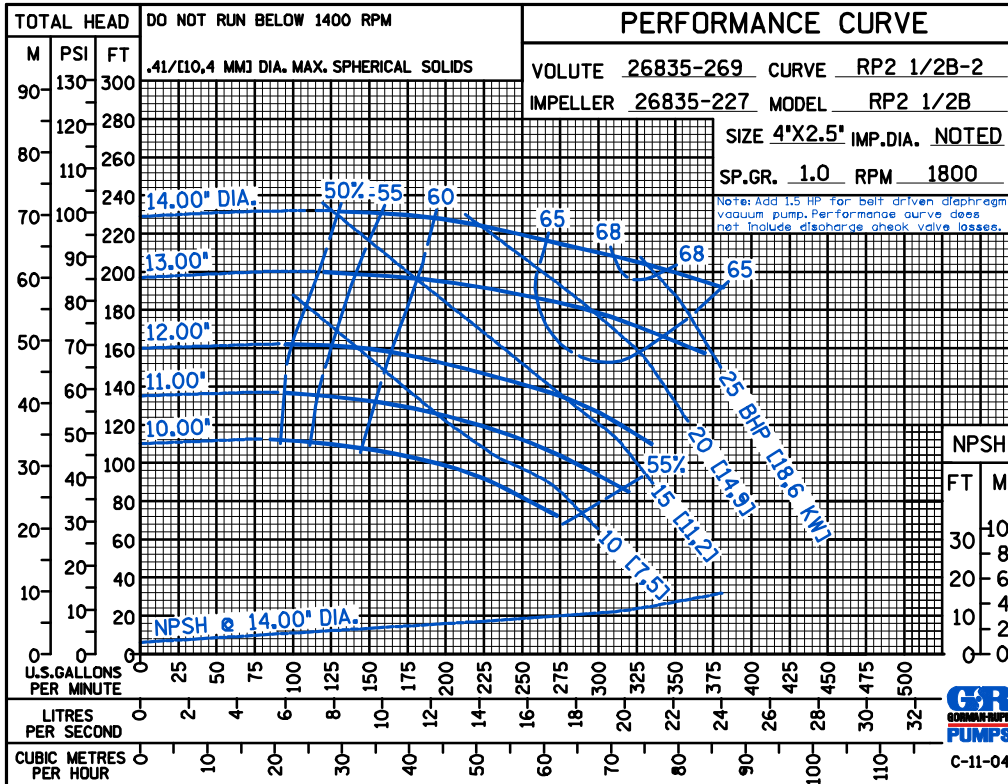
SECTION 42, PAGE 120

APPROXIMATE DIMENSIONS and WEIGHTS

**NET WEIGHT:** 880 LBS. (400 KG.)  
**SHIPPING WEIGHT:** 980 LBS. (445 KG.)  
**CRATE SIZE:** 46 CU. FT. (1,3 CU. M.)



ENGINE PERFORMANCE



ELECTRIC MOTOR PERFORMANCE



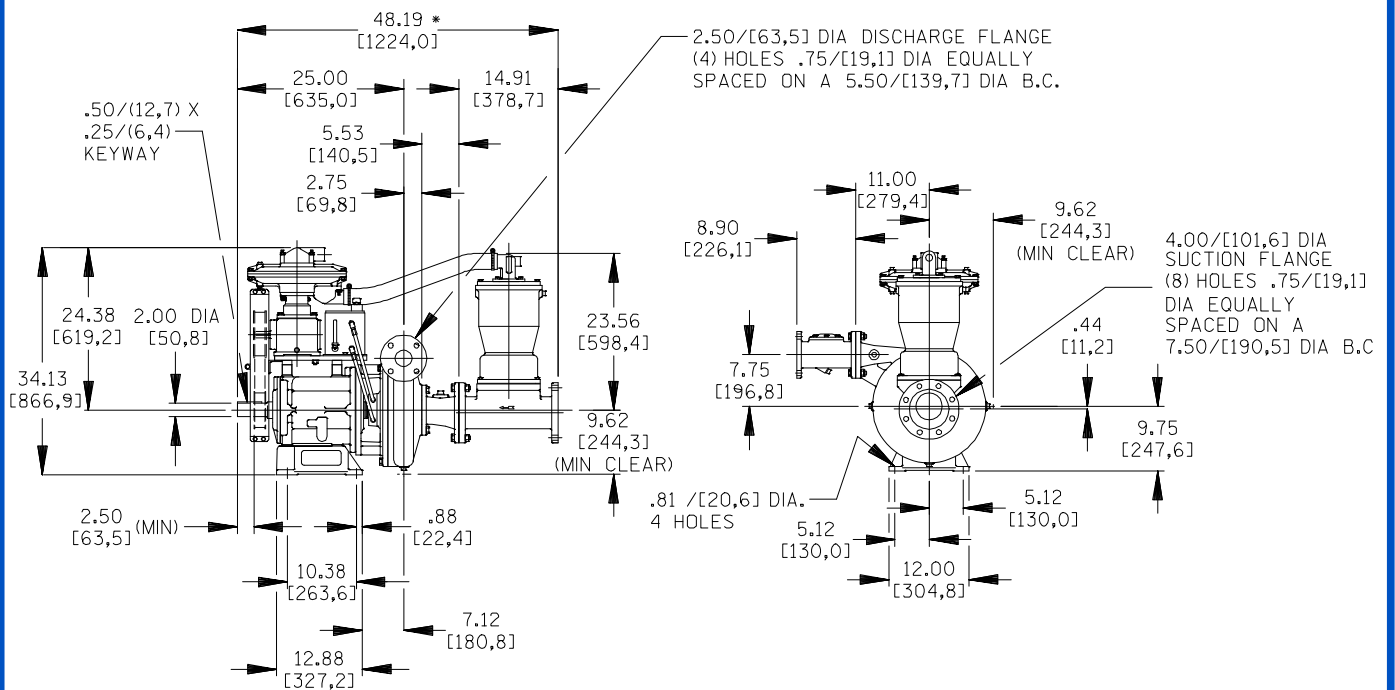
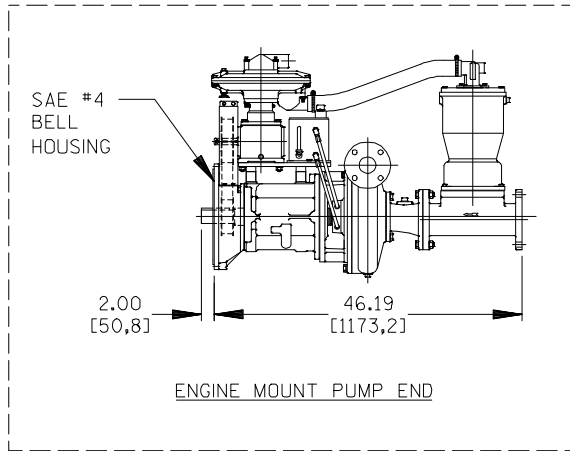
**THE GORMAN-RUPP COMPANY • MANSFIELD, OHIO**

GORMAN-RUPP OF CANADA LIMITED • ST. THOMAS, ONTARIO, CANADA

Specifications Subject to Change Without Notice

Printed in U.S.A.

ACDEU



NOTE:  
\* OVERALL DIMENSION MAY VARY ± .125/[3,2]

DIMENSIONS:  
INCHES  
[MILLIMETERS]



THE GORMAN-RUPP COMPANY • MANSFIELD, OHIO

GORMAN-RUPP OF CANADA LIMITED • ST. THOMAS, ONTARIO, CANADA

Specifications Subject to Change Without Notice

Printed in U.S.A.