



**Basic, SAE Mount, Electric Motor or Engine Driven
Priming Assisted Centrifugal Pump
Model RP6B60
Size 8" x 6"**



PUMP SPECIFICATIONS

- Size:** 8" x 6" (203 mm x 152 mm) Flanges.
- Casing:** Gray Iron. Maximum Operating Pressure 195 psi (1345 kPa).*
- Enclosed Type, Two Vane Impeller:** Gray Iron No. 30.
Handles 3" (76 mm) Diameter Spherical Solids.
- Impeller Shaft:** Stress-Proof Stainless Steel.
- Replaceable Wear Ring:** Gray Iron No. 30.
- Back Plate:** Gray Iron No. 30.
- Bearing Frame:** Gray Iron No. 30.
- Seal:** Cycloseal® Type, Mechanical w/Run-Dry Oil-Lubrication System. Silicon Carbide Rotating Face. Tungsten Titanium Carbide Stationary Face. Fluorocarbon (DuPont Viton® or Equivalent) Elastomers. Stainless Steel No. 18-8 Cage and Spring. Maximum Temperature of Liquid Pumped 160°F (71°C).*
- Shaft Sleeve:** Chrome Plated Stainless Steel No. 416.
- Priming Chamber:** Gray Iron No. 30 Housing w/Stainless Steel Float and Linkage.
- Vacuum Hose:** EPDM.
- Discharge Check Valve:** Gray Iron No. 30 Housing; Buna-N Flapper.
- Radial Bearing:** Single Row Ball.
- Thrust Bearing:** Single Row Ball.
- Bearing Lubrication:** Grease.
- Flanges:** Gray Iron No. 30.
- Gaskets:** Vegetable Fiber, Resistant Synthetic Rubber.
- O-Rings:** Buna-N.
- Hardware:** Standard Plated Steel.
- Seal Oil Reservoir Sight Gauge.**
- Standard Equipment:** Belt-Driven 50 CFM Vacuum Priming Pump. Positive Seating Vacuum Priming Valve. Discharge Check Valve.
- Optional Equipment:** NPT Threaded Flanges. Metric Flanges. Strainer. SAE 1, 2 or 4 Bellhousing Adaptors.

*Consult Factory for Applications Exceeding Maximum Pressure and/or Temperature Indicated.

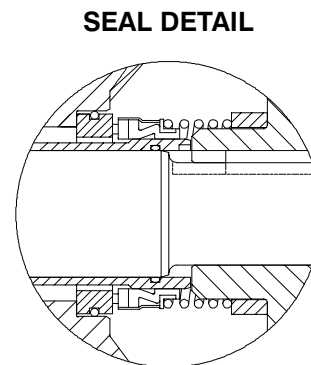
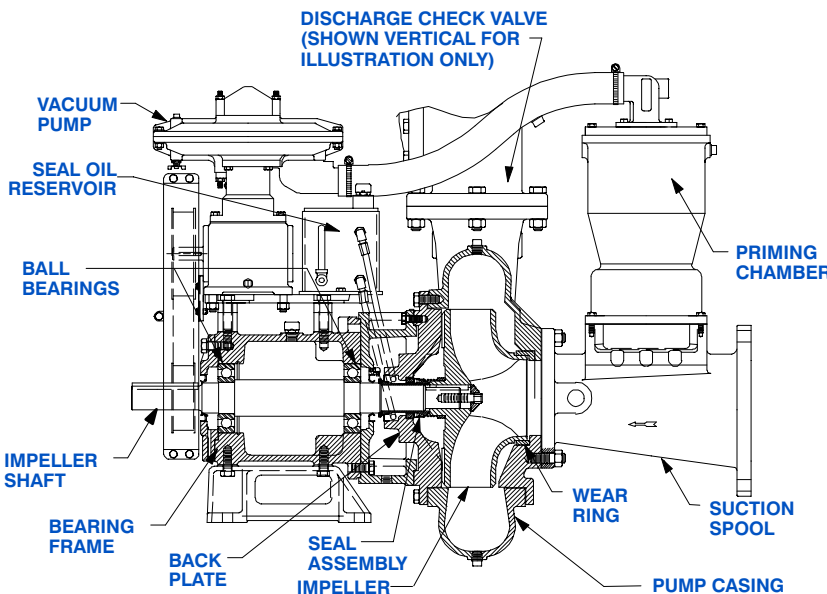


WARNING!

Do not use in explosive atmosphere or for pumping volatile flammable liquids.

CONFIGURATION OPTIONS

This Gorman-Rupp RP Series™ Pump is Available in the Following Configurations:
Basic Frame Mounted.
SAE 3/11.5 Bellhousing w/Stromag Coupling.



THE GORMAN-RUPP COMPANY • MANSFIELD, OHIO

GORMAN-RUPP OF CANADA LIMITED • ST. THOMAS, ONTARIO, CANADA

www.grpumps.com

Specifications Subject to Change Without Notice

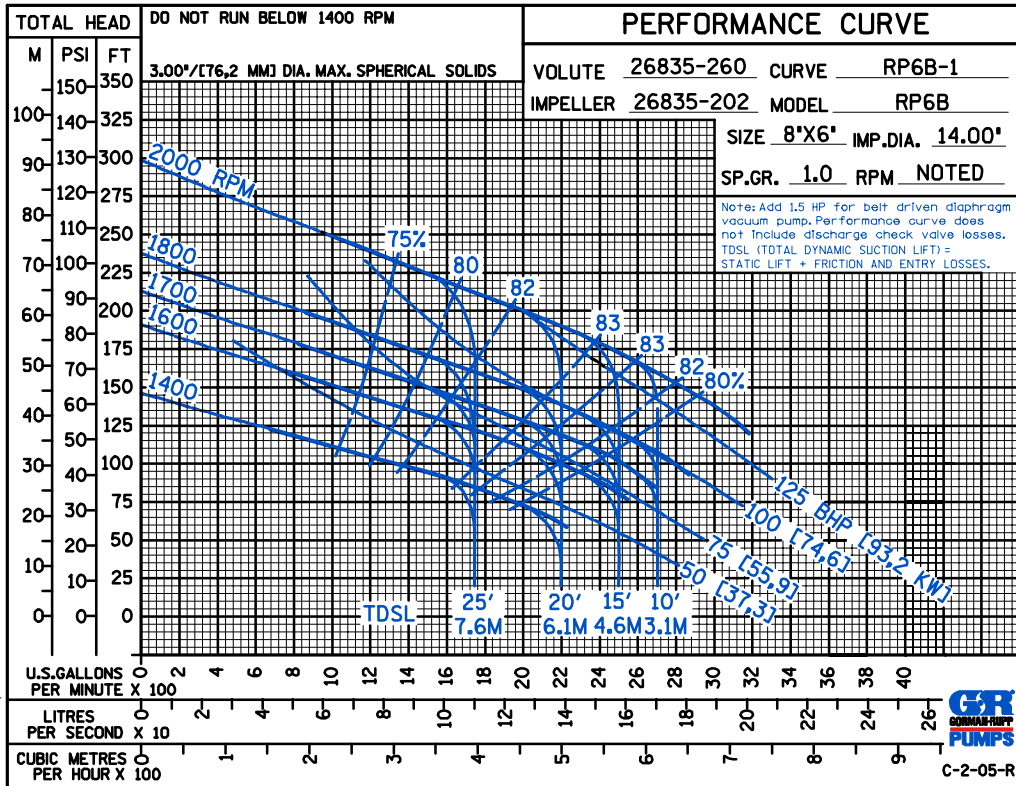
Printed in U.S.A.

Specification Data

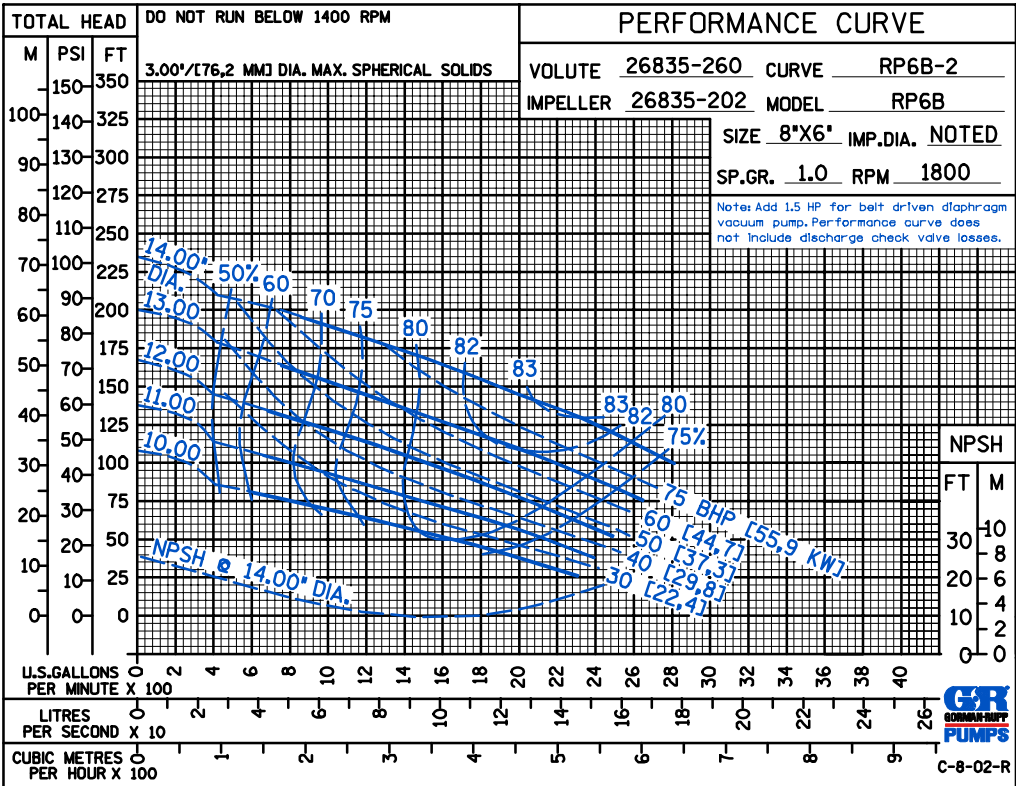
SECTION 42, PAGE 1020

APPROXIMATE DIMENSIONS and WEIGHTS

NET WEIGHT: 1200 LBS. (544 KG.)
SHIPPING WEIGHT: 1350 LBS. (612 KG.)
CRATE SIZE: 77 CU. FT. (2,2 CU. M.)



ENGINE PERFORMANCE



ELECTRIC MOTOR PERFORMANCE

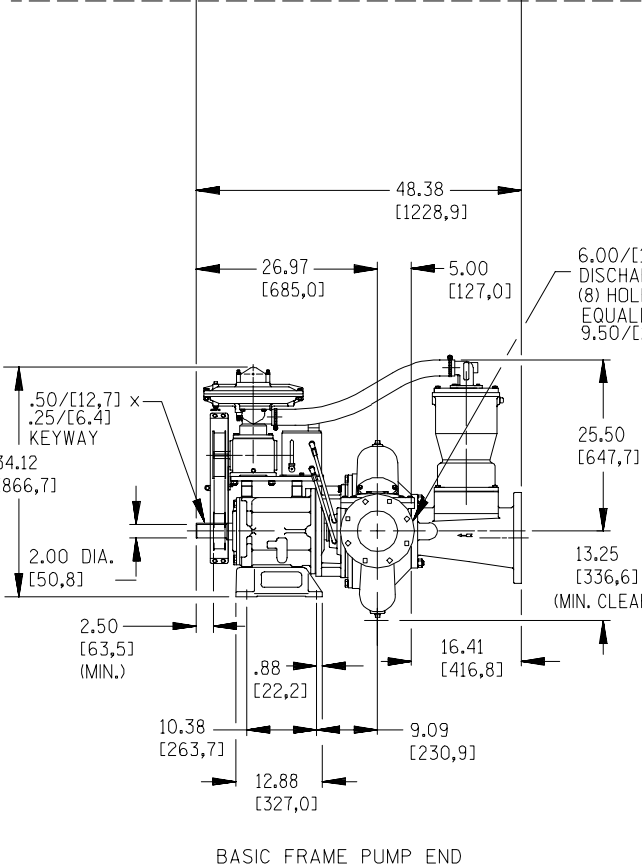
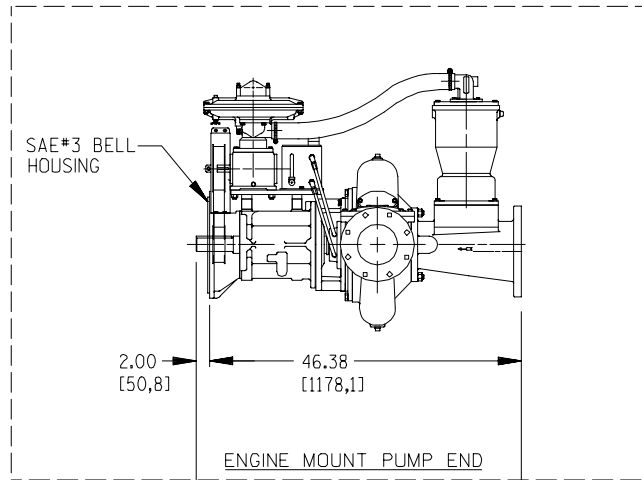


THE GORMAN-RUPP COMPANY • MANSFIELD, OHIO

GORMAN-RUPP OF CANADA LIMITED • ST. THOMAS, ONTARIO, CANADA

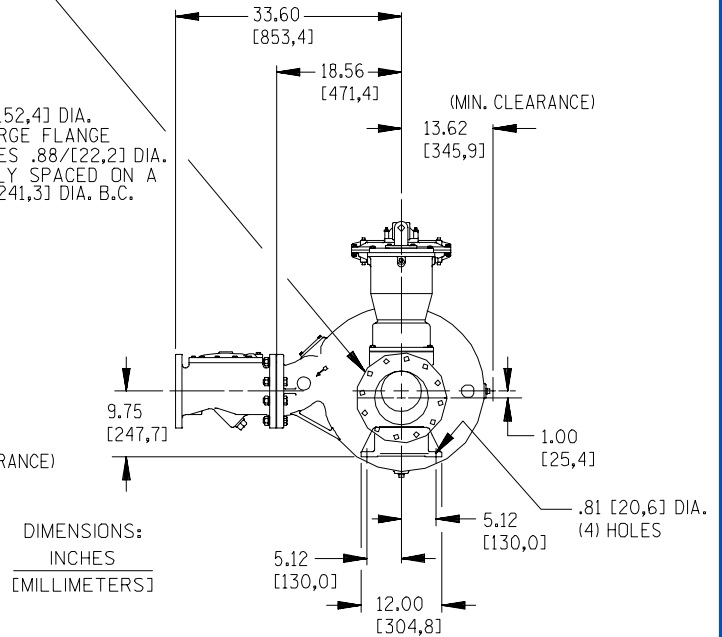
Specifications Subject to Change Without Notice

Printed in U.S.A.



8.00/[203,2] DIA. SUCTION FLANGE
(8) HOLES .88/[22,4] DIA. EQUALLY
SPACED ON A 11.75/[298,5] DIA. B.C.

6.00/[152,4] DIA. DISCHARGE FLANGE
(8) HOLES .88/[22,2] DIA. EQUALLY
SPACED ON A 9.50/[241,3] DIA. B.C.

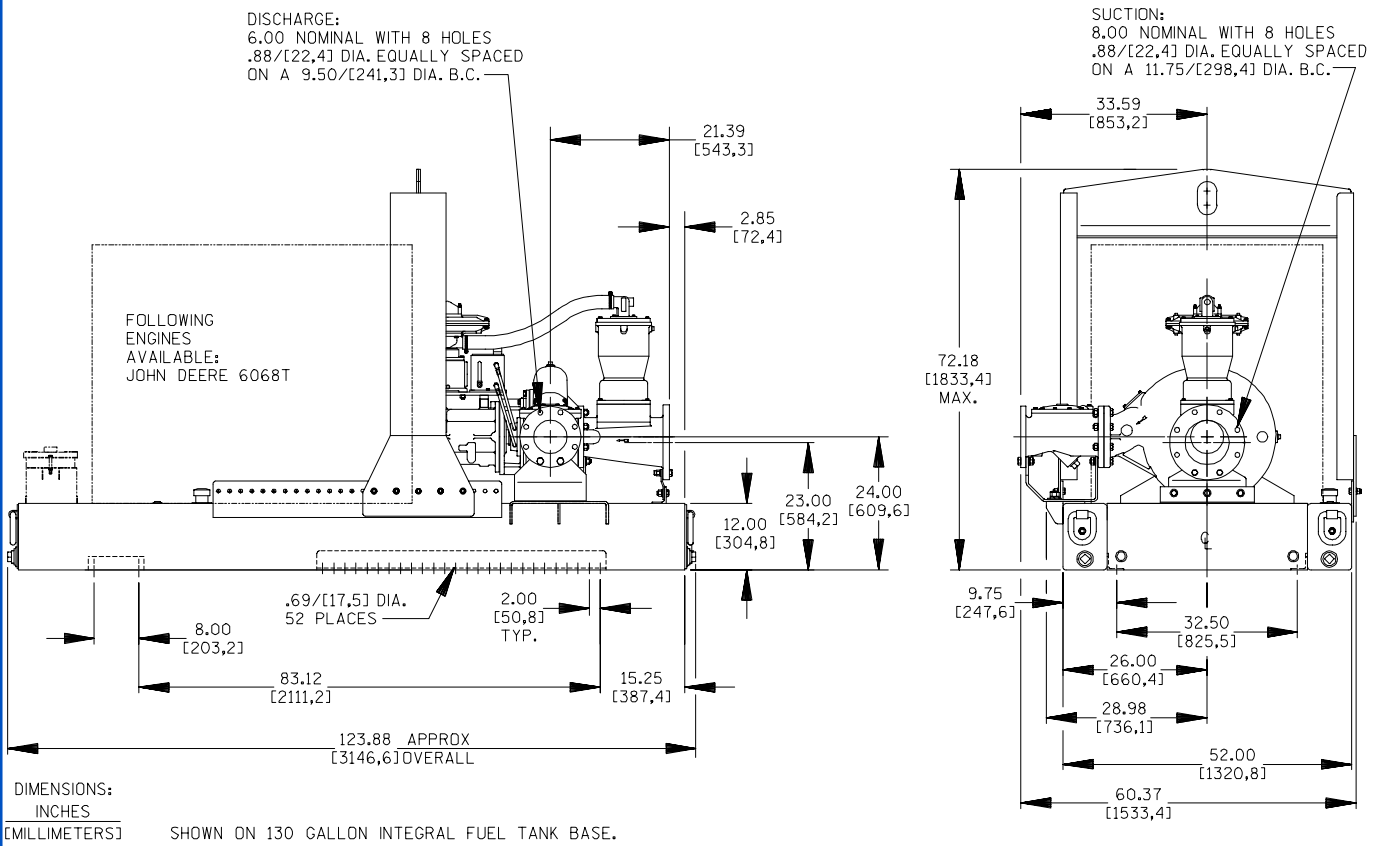
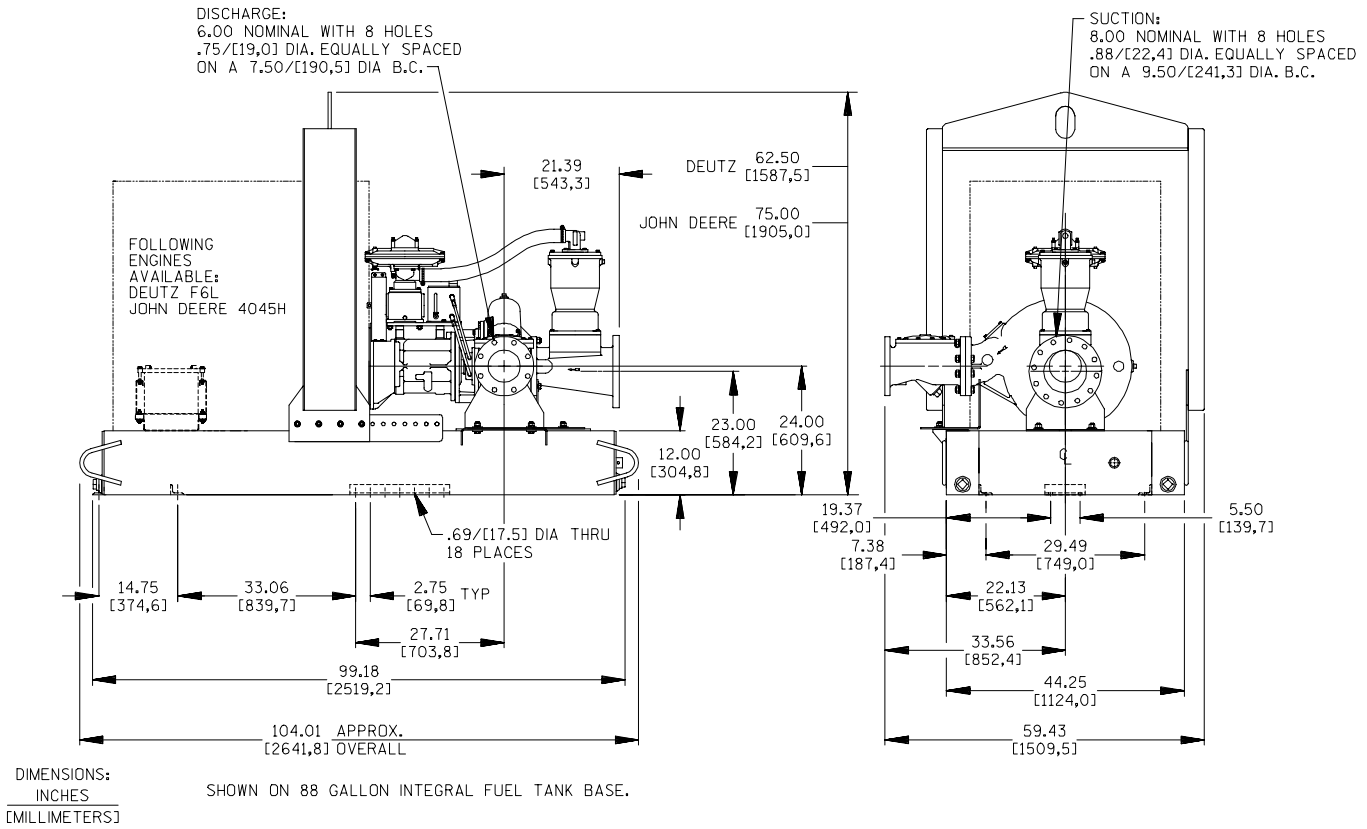


THE GORMAN-RUPP COMPANY • MANSFIELD, OHIO

GORMAN-RUPP OF CANADA LIMITED • ST. THOMAS, ONTARIO, CANADA

Specifications Subject to Change Without Notice

Printed in U.S.A.



THE GORMAN-RUPP COMPANY • MANSFIELD, OHIO

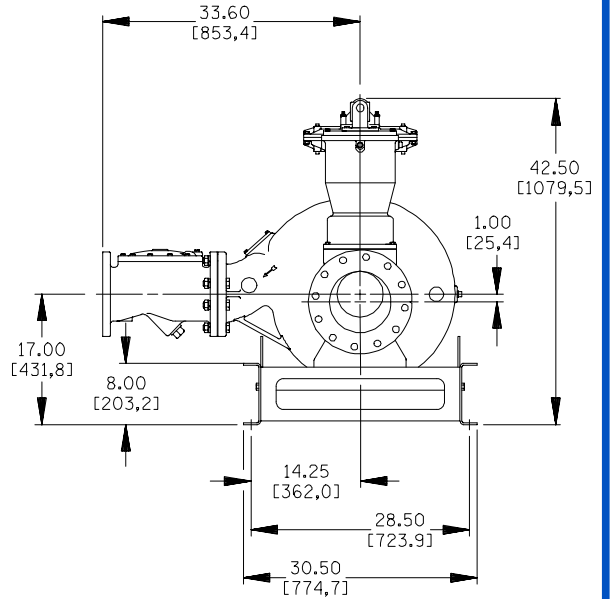
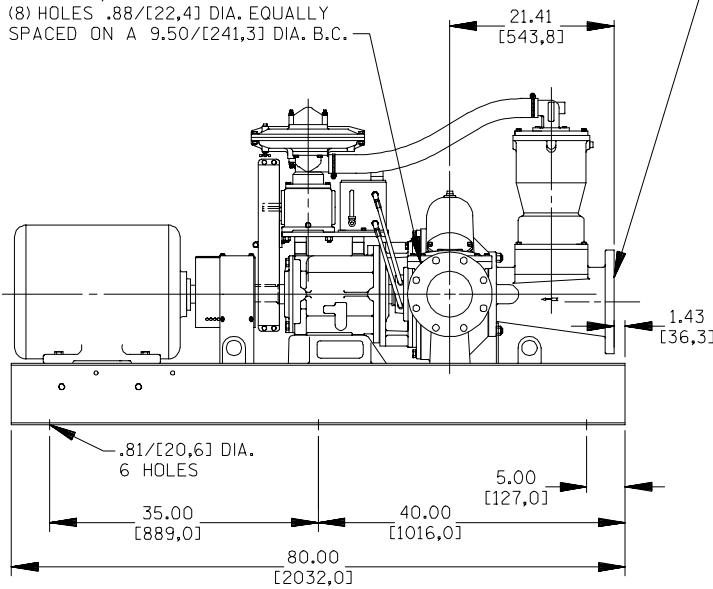
GORMAN-RUPP OF CANADA LIMITED • ST. THOMAS, ONTARIO, CANADA

Specifications Subject to Change Without Notice

Printed in U.S.A.

6.00/[152,4] DIA. DISCHARGE FLANGE
(8) HOLES .88/[22,4] DIA. EQUALLY
SPACED ON A 9.50/[241,3] DIA. B.C.

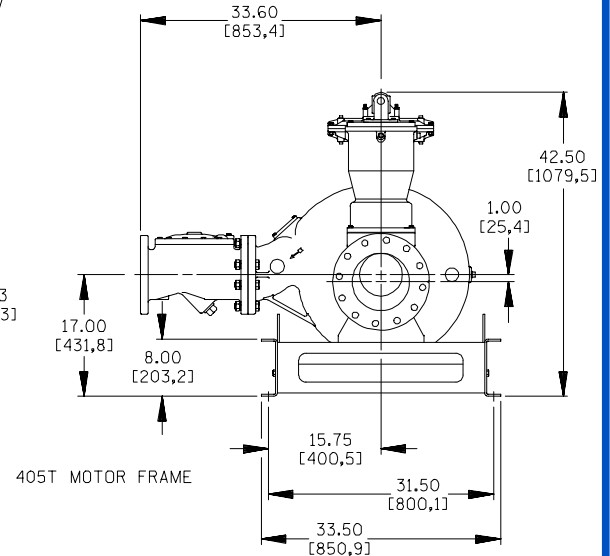
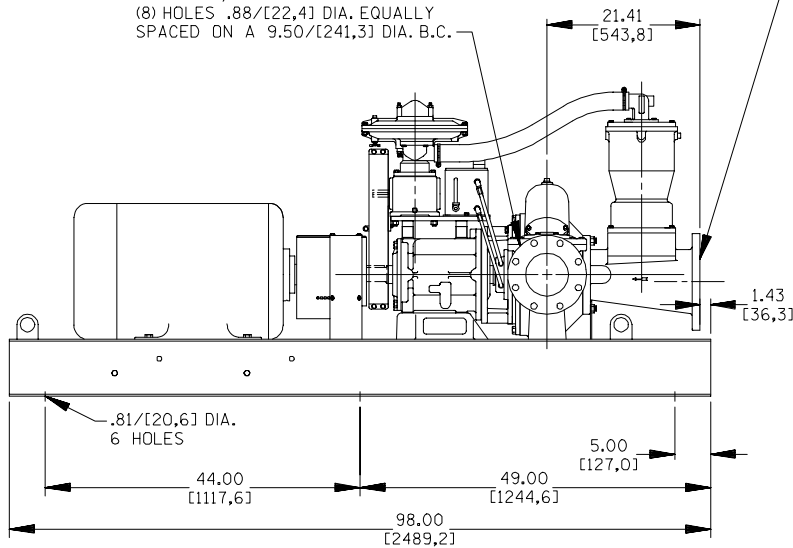
8.00/[203,2] DIA. SUCTION FLANGE
(8) HOLES .88/[22,4] DIA. EQUALLY
SPACED ON A 11.75/[298,4] DIA. B.C.



DIMENSIONS:
INCHES
[MILLIMETERS]

6.00/[152,4] DIA. DISCHARGE FLANGE
(8) HOLES .88/[22,4] DIA. EQUALLY
SPACED ON A 9.50/[241,3] DIA. B.C.

8.00/[203,2] DIA. SUCTION FLANGE
(8) HOLES .88/[22,4] DIA. EQUALLY
SPACED ON A 11.75/[298,4] DIA. B.C.



DIMENSIONS:
INCHES
[MILLIMETERS]



THE GORMAN-RUPP COMPANY • MANSFIELD, OHIO

GORMAN-RUPP OF CANADA LIMITED • ST. THOMAS, ONTARIO, CANADA

Specifications Subject to Change Without Notice

Printed in U.S.A.